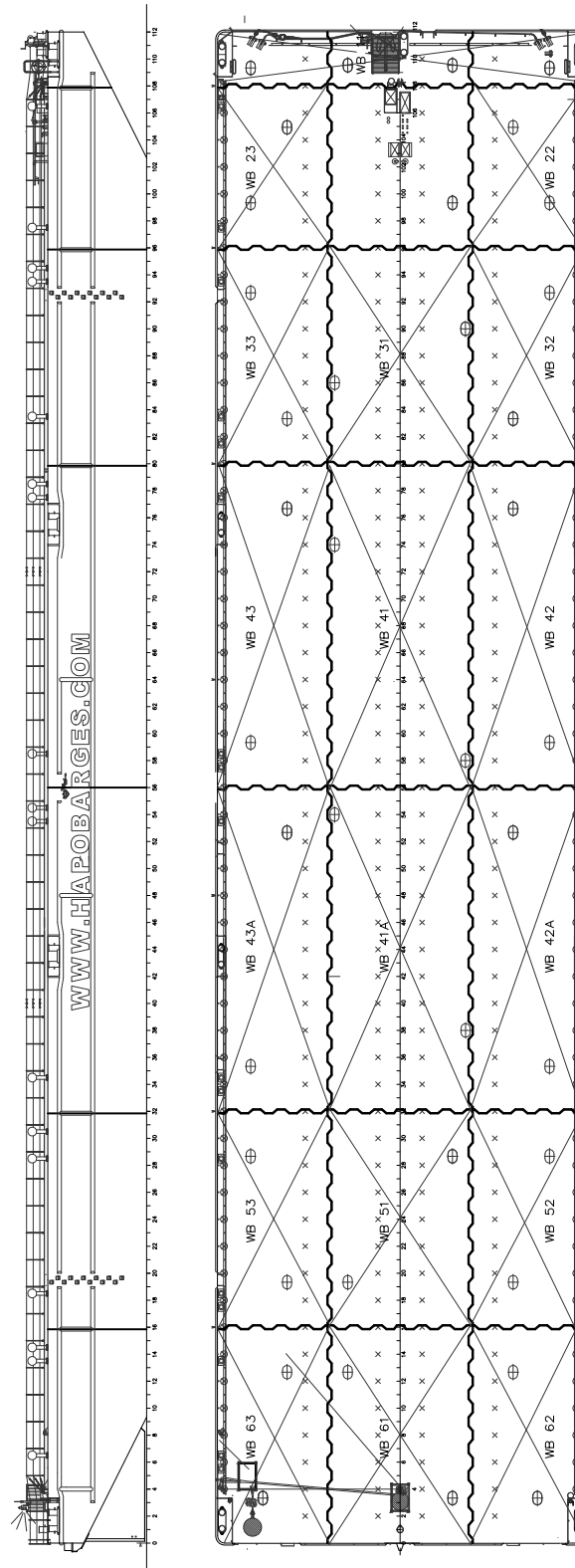




Principal particulars		Deck equipment	
Build	1998	Bollard & chocks	8 x double bollard SWL 28 t
Class notation	Loyds Register ✕100 AN Pontoon	Navigation lights	1 set of two lights. Solar powered
Flag	Panama	Anchor	1 x 2 t not installed.
GT / NT	2473 t / 741 t	Machinery	
Deadweight	5430 t	Ballast system	All tanks ballastable with galvanised system
Lenght overall	84.6 m	Ballast Pump	2 x 600 m ³ /hr self priming diesel engine driven.
Beam overall	20.3 m		
Depth	5.5 m		
Summer draft	4.0 m		
Ligt ship weight	1140 t		
Deck space	1680 m ²		
Deckload	15 t/m ²		

DETAILS BELIEVED TO BE CORRECT, BUT NOT GUARANTEED. SPECIFICATION SUBJECT TO CHANGE WITHOUT NOTICE.

HAPO INTERNATIONAL BARGES B.V. ■ +31 (0)18 0414 671 ■ INFO@HAPOBARGES.COM ■ CC: 23076161 ■
 VAT: NL 0085.89.288.B01 ■ OFFICE ADDRESS: RINGDIJK 486 2983 GS RIDDERKERK ■ POSTAL ADDRESS: POSTBUS 1060 2980 BB RIDDERKERK



DETAILS BELIEVED TO BE CORRECT, BUT NOT GUARANTEED. SPECIFICATION SUBJECT TO CHANGE WITHOUT NOTICE.

HAPO INTERNATIONAL BARGES B.V. ■ +31 (0)18 0414 671 ■ INFO@HAPOBARGES.COM ■ CC: 23076161 ■

VAT: NL 0085.89.288.B01 ■ OFFICE ADDRESS: RINGDIJK 486 2983 GS RIDDERKERK ■ POSTAL ADDRESS: POSTBUS 1060 2980 BB RIDDERKERK