

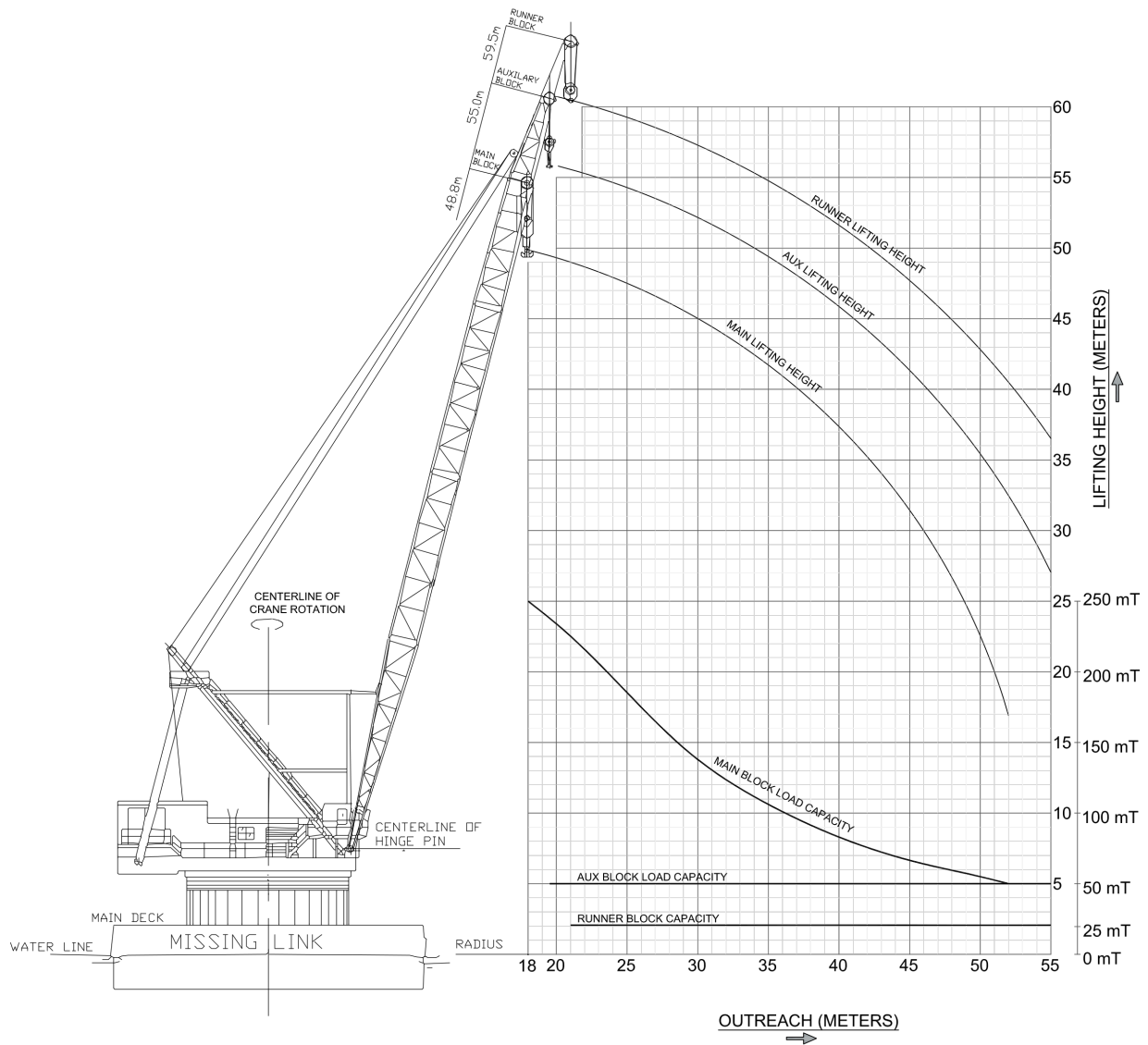


Principal particulars		Crane Specifications	
Build	1967	Type	Clyde 37 Whirley (Offshore)
Class notation	DNV-GL #100 A5 Barge Crane barge M	Capacity	250 t @ 18 m to 50 t @ 55 m
Flag	Panama	Revolving Speed	Full revolving @ 0,75 RPM
GT / NT	2055 t / 616 t	Hoisting speed	Whipline 27 t @ 38 m/min Aux Block 50 t @ 12,5 m/min Main Block 250 t @ 4,5 m/min
Deadweight	2000 t	Deck Equipment	
Length Overall	76.6 m	Mooring / Anchor	4 x Mooring winch 5 t 2 x Skagit RB90, triple drum, 35 t line pull
Breadth Overall	22.0 m	Accommodation	5 x 2 man cabin with shower and toilet. Galley, messroom and dayroom.
Depth	4.6 m	Main Machinery	
Summer Draft	3.1 m	Main Engines	2 x Cummins 345 kva 60 Hz
Deck Capacity	10 t/m ² – 900 m ² freespace	Generator Set	1 x Deutz 70 kva 60 Hz
Tank Capacities			
Fuel	360 m ³		
Drinking-water	40 m ³		
Freshwater	85 m ³		

DETAILS BELIEVED TO BE CORRECT, BUT NOT GUARANTEED. SPECIFICATION SUBJECT TO CHANGE WITHOUT NOTICE.

HAPO INTERNATIONAL BARGES B.V. ■ +31 (0)18 0414 671 ■ INFO@HAPOBARGES.COM ■ CC: 23076161 ■
VAT: NL 0085.89.288.B01 ■ OFFICE ADDRESS: RINGDIJK 486 2983 GS RIDDERKERK ■ POSTAL ADDRESS: POSTBUS 1060 2980 BB RIDDERKERK

CAPACITY CHART FOR CRANE BARGE "MISSING LINK"



- AUXILIARY BLOCK 50 mT CAPACITY AT 55 MTR. RADIUS
- RUNNER BLOCK 27 mT CAPACITY AT 59.5 MTR. RADIUS
- FOR EXACT WORKING DIAGRAMS OWNER TO BE CONSULTED

FOR INFORMATION

DETAILS BELIEVED TO BE CORRECT, BUT NOT GUARANTEED. SPECIFICATION SUBJECT TO CHANGE WITHOUT NOTICE.

HAPO INTERNATIONAL BARGES B.V. ■ +31 (0)18 0414 671 ■ INFO@HAPOBARGES.COM ■ CC: 23076161 ■
 VAT: NL 0085.89.288.B01 ■ OFFICE ADDRESS: RINGDIJK 486 2983 GS RIDDERKERK ■ POSTAL ADDRESS: POSTBUS 1060 2980 BB RIDDERKERK