



Principal particulars		Deck equipment	
Built	2018	Bridle recovery winch	1 x 10 t x 9m/min
Class notation	Bureau Veritas 1 ✕ HULL ✕ MACH Pontoon Unrestricted Navigation	Navigation lights	1 set of three lights. Solar powered
Flag	Netherlands, Ridderkerk	Smit brackets	2 x 200 t incl. fairleaders
GT/NT	9119 t / 2735 t	Bollards & chocks	14 x 50 t
Deadweight	20006 t	Anchor	3040 t HHP stockless bower anchor
Length overall	122 m	Anchor winch	21t x 9m/min. hydraulic operated
Beam overall	36.6 m		
Depth	7.6 m		
Summer draft	5.803 m		
Light ship weight	4105 t		
Deck space	4426 m ²		
Deckload	15 t/m ²		
Frame spacing	2.5 m		
		Machinery	
		Main supply	2x 250kW Scania, 440V, 60Hz
		Ballast system	Hydraulic valves operated from A/C control room.
		Ballast pump	2 x 1080 m ³ /hr (electric)
		Bilge pump	1 x 15 m ³ /hr (electric)

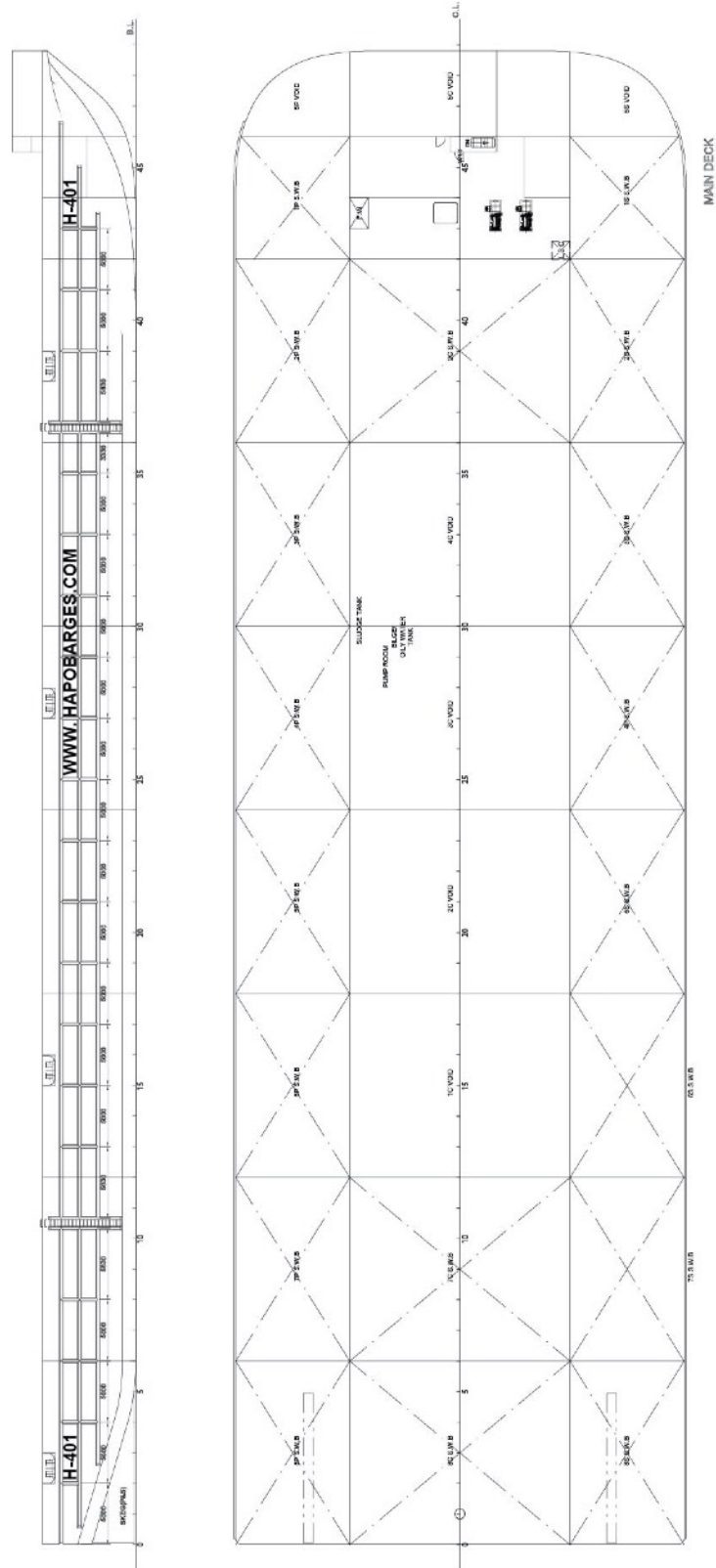
DETAILS BELIEVED TO BE CORRECT, BUT NOT GUARANTEED. SPECIFICATION SUBJECT TO CHANGE WITHOUT NOTICE.

HAPO INTERNATIONAL BARGES B.V. ■ +31 (0)18 0414 671 ■ INFO@HAPOBARGES.COM ■ CC: 23076161 ■
 VAT: NL 0085.89.288.B01 ■ OFFICE ADDRESS: RINGDIJK 486 2983 GS RIDDERKERK ■ POSTAL ADDRESS: POSTBUS 1060 2980 BB RIDDERKERK



DETAILS BELIEVED TO BE CORRECT, BUT NOT GUARANTEED. SPECIFICATION SUBJECT TO CHANGE WITHOUT NOTICE.

HAPO INTERNATIONAL BARGES B.V. ■ +31 (0)18 0414 671 ■ INFO@HAPOBARGES.COM ■ CC: 23076161 ■
VAT: NL 0085.89.288.B01 ■ OFFICE ADDRESS: RINGDIJK 486 2983 GS RIDDERKERK ■ POSTAL ADDRESS: POSTBUS 1060 2980 BB RIDDERKERK



DETAILS BELIEVED TO BE CORRECT, BUT NOT GUARANTEED. SPECIFICATION SUBJECT TO CHANGE WITHOUT NOTICE.

HAPO INTERNATIONAL BARGES B.V. ■ +31 (0)18 0414 671 ■ INFO@HAPOBARGES.COM ■ CC: 23076161 ■
 VAT: NL 0085.89.288.B01 ■ OFFICE ADDRESS: RINGDIJK 486 2983 GS RIDDERKERK ■ POSTAL ADDRESS: POSTBUS 1060 2980 BB RIDDERKERK